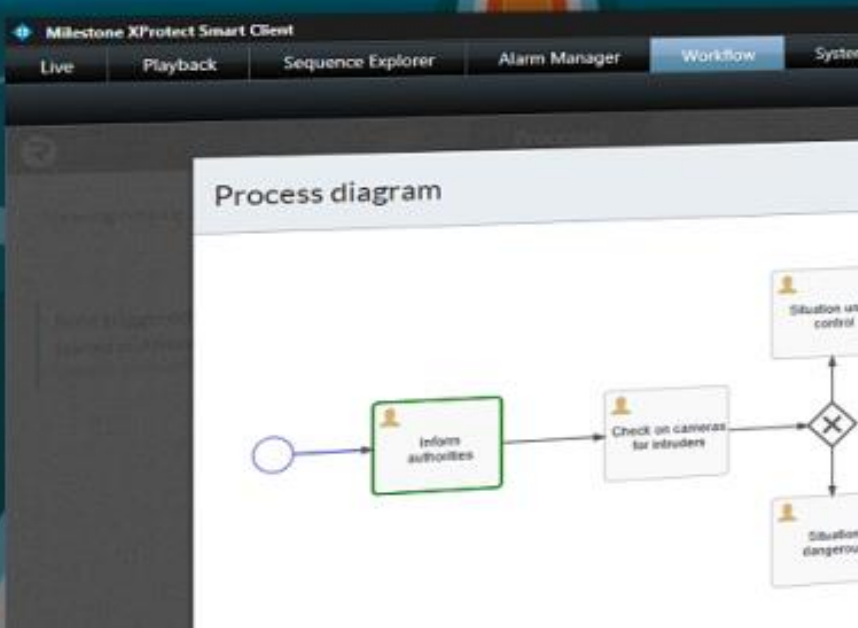




WORKFLOW

for Milestone XProtect®



QUICK INSTALLATION GUIDE

Product Version: 1.0.1.1

Legal Notice

The information in this publication is furnished for information use only and does not constitute a commitment from Radinium for any of the features or functions discussed. Radinium assumes no responsibility or liability for the accuracy of the information presented, which is subject to change without notice. The Workflow and all other Radinium software or service names and slogans are registered trademarks of Radinium and all other registered trademarks are property of their respective owners.

Disclaimer

Workflow is provided by Radinium "as is" and "with all faults." Radinium makes no representations or warranties of any kind concerning the safety, suitability, lack of viruses, inaccuracies, typographical errors, or other harmful components of Workflow. There are inherent dangers in the use of any software and you are solely responsible for determining whether Workflow is compatible with your equipment and other software you have installed. You are solely responsible for the protection of your equipment and backup of your data. Radinium will not be liable for any damages you may suffer in connection with using, modifying or distributing Workflow.

Overview

This guide provides quick installation instructions on how to install Radium Workflow for Milestone XProtect®. It lists all product requirements and guides you through the installation process. It also explains how to obtain a 30-day Trial License. Up to three Workflows are allowed during the Trial per SLC and Site. This guide can be used by system integrators and administrators.

For detailed information on how to configure and use the product, please refer to our product tutorial videos.

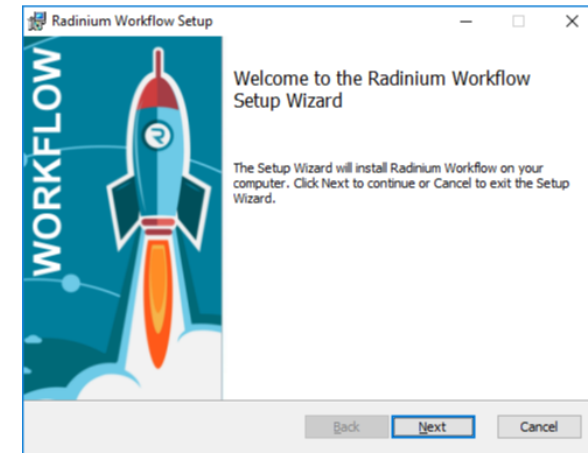
Installation Prerequisites

Milestone Express+, Professional+, Expert, Corporate 2017 R3 or higher must be installed and working.

Windows 10 Pro
Server 2012 R2
Server 2016
Server 2019

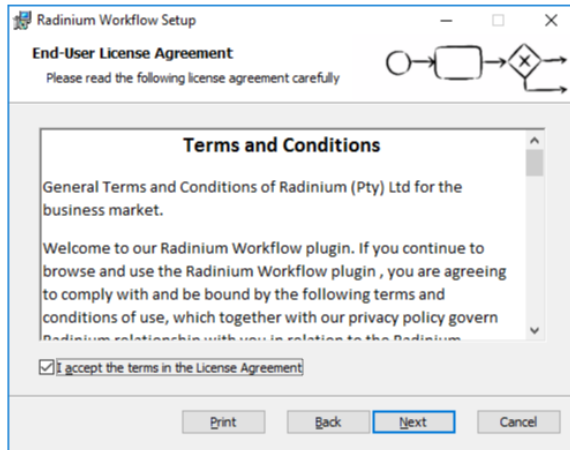
Installing Workflow

1. Download Workflow from www.radium.com.
2. Run the setup package 'Radium Workflow.exe'.
3. Do you want to install Radium Workflow? Press Yes.
4. Installer will Extract.

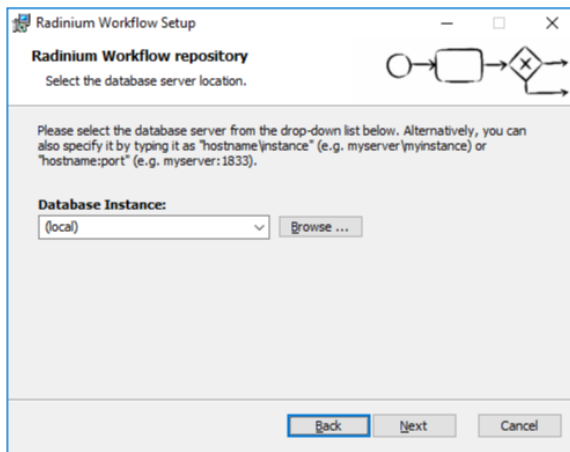


5. You will notice a Command Prompt window open in the background. **Do not close.** Press Next to run the Setup Wizard.

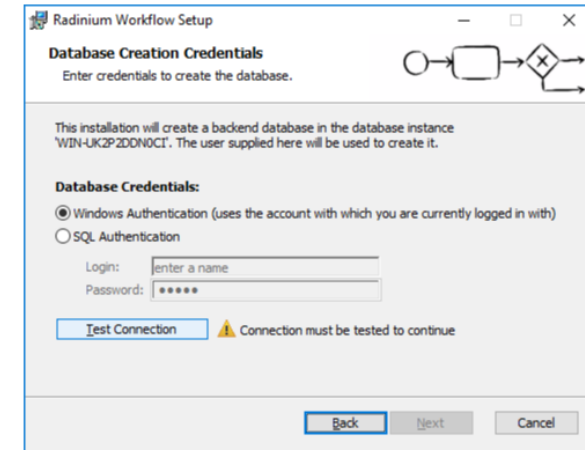
6. Accept the terms in the License Agreement and press Next.



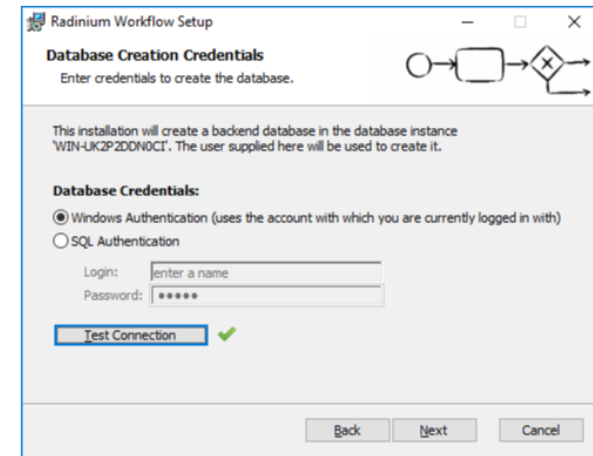
7. Select the Milestone database server for the Radium Workflow repository. Local is the localhost; the same machine where the SQL database resides.



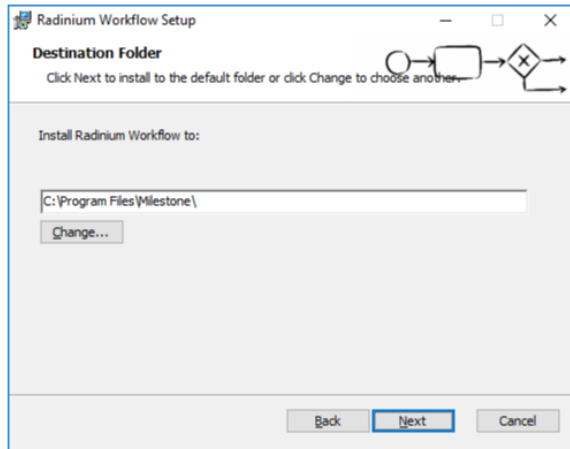
8. Select your Database Login Credentials and Test the Connection.



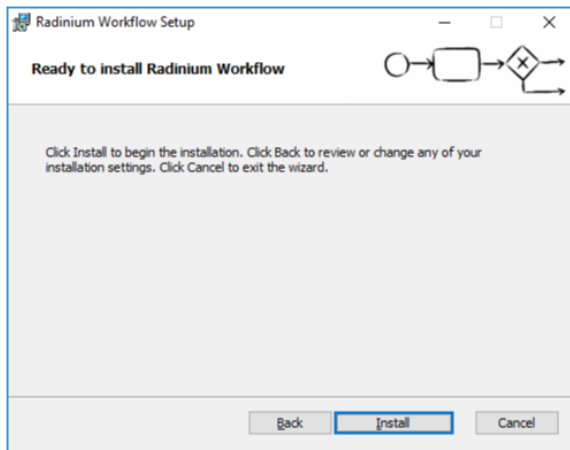
9. When the Test Connection has passed, press Next.



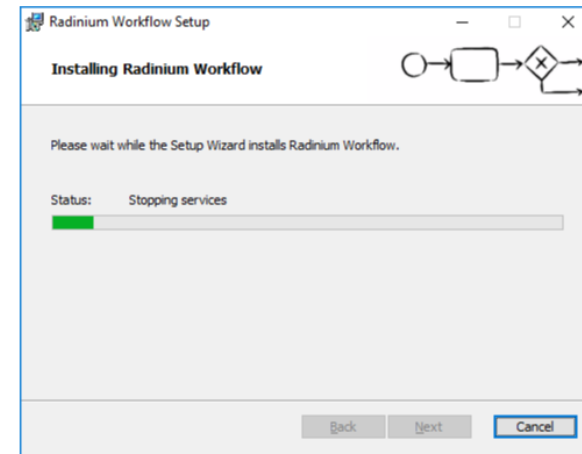
10. It is recommended you keep the default folder and press Next.



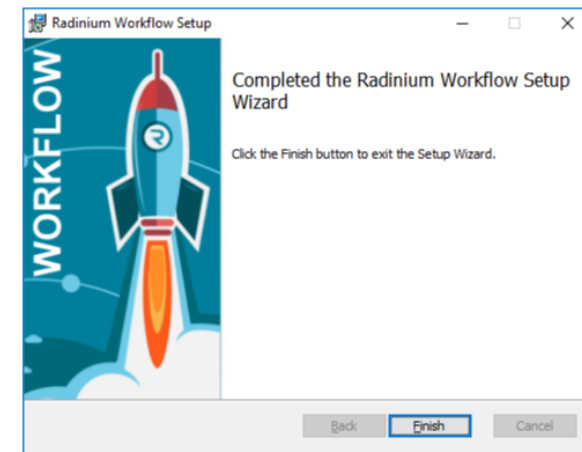
11. Press Install to start the installation.



12. The Milestone Event Server will be stopped and files will be copied.



13. You can close the installation wizard by pressing Finish.



14. The installation will continue to setup. SQL Service will be stopped and started. Please be patient - the window will close on completion.

```

C:\Windows\system32\cmd.exe
Please wait for the installation to complete...
Waiting for 0 seconds, press CTRL+C to quit ...
Stopping SQL Server for installation
Installing OpenJDK
Installing Workflow Phase 1
Waiting for 0 seconds, press CTRL+C to quit ...
Starting SQL Server
Continuing installation of Workflow
Waiting for 0 seconds, press CTRL+C to quit ...
Setting Workflow to auto-start
[SC] ChangeServiceConfig SUCCESS
Waiting for 0 seconds, press CTRL+C to quit ...
1 file(s) copied.
1 file(s) copied.
1 file(s) copied.
1 file(s) copied.
1 file(s) copied.
Initializing workflow
Waiting for 5 seconds, press CTRL+C to quit ...

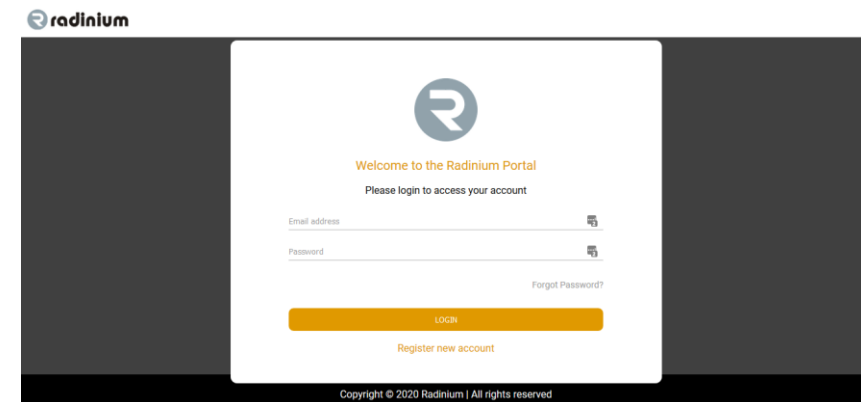
```

Obtaining a 30 day Trial License

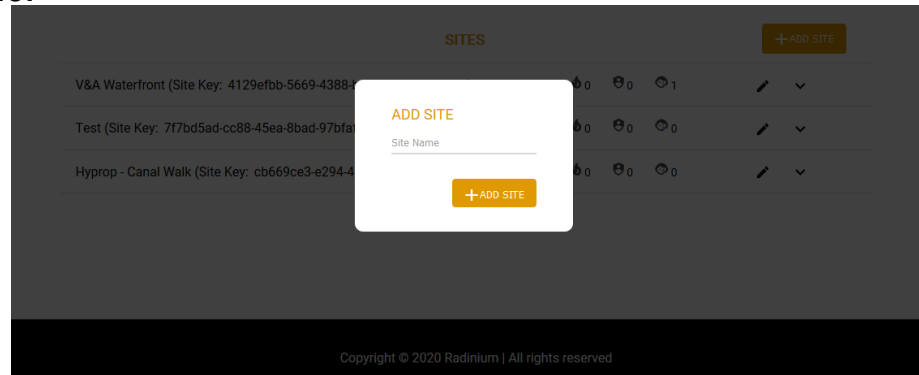
1. Go to www.radinium.com.
2. Click on Portal on the top menu.



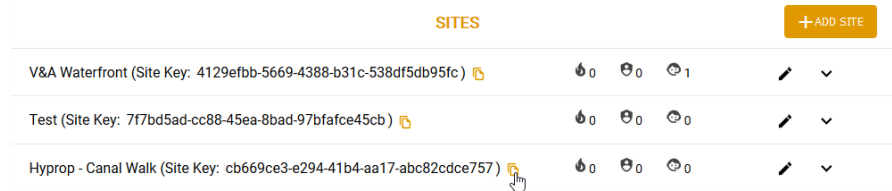
3. Register an account if you do not have your login credentials.



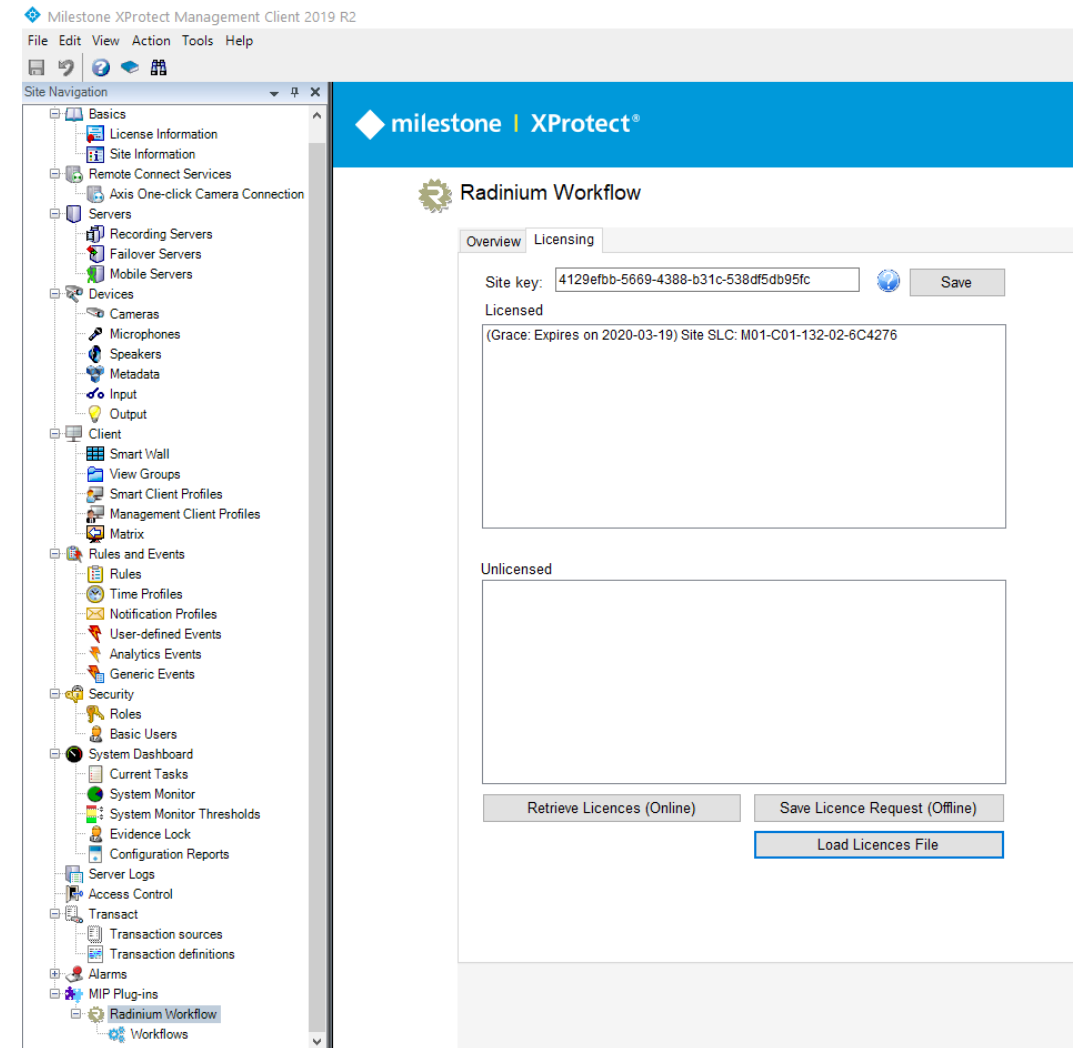
4. Once you are logged in, go to Add Site and enter your Site Name.



5. Copy your Site Key onto your clipboard by pressing the Copy icon.



6. Open the Milestone Management Client and go to MIP Plug-ins, Radium Workflow -> Licensing. Copy the Site Key inside the Site Key box and Save. You will then see an unlicensed key. Click Retrieve License (Online) if you are connected to the Internet. It will retrieve a 3 Workflow License with a 30-day grace period linked with your SLC. If you do not have internet onsite, go to the Offline License Request in this document.



7. To check your Registered Trial License, go back to the Portal and click on the down arrow, which will show your Site License linked with your SLC.

The screenshot shows a web interface for managing sites. At the top, there is a header with the word "SITES" and a "+ADD SITE" button. Below the header, there is a section for "V&A Waterfront (Site Key: 4129efbb-5669-4388-b31c-538df5db95fc)" with icons for a lock, a trash can, and a refresh button. Below this, there is a section for "Upload offline license request" with a "SUBMIT" button. At the bottom, there is a table with the following data:

Product Type	Serial number / SLC	Panel Number
Workflow (TRIAL)	M01-C01-132-02-6C4276	N/A

Offline license request

Instead of retrieving your license online, you can Save License Request (Offline) in the Milestone Management Client in a .Irc file.

Take that file, go to your Portal and upload the Offline License Request. It will generate a .lic file, which you can then upload in the Management Client Radinium Workflow Licensing tab by clicking on Load License File.