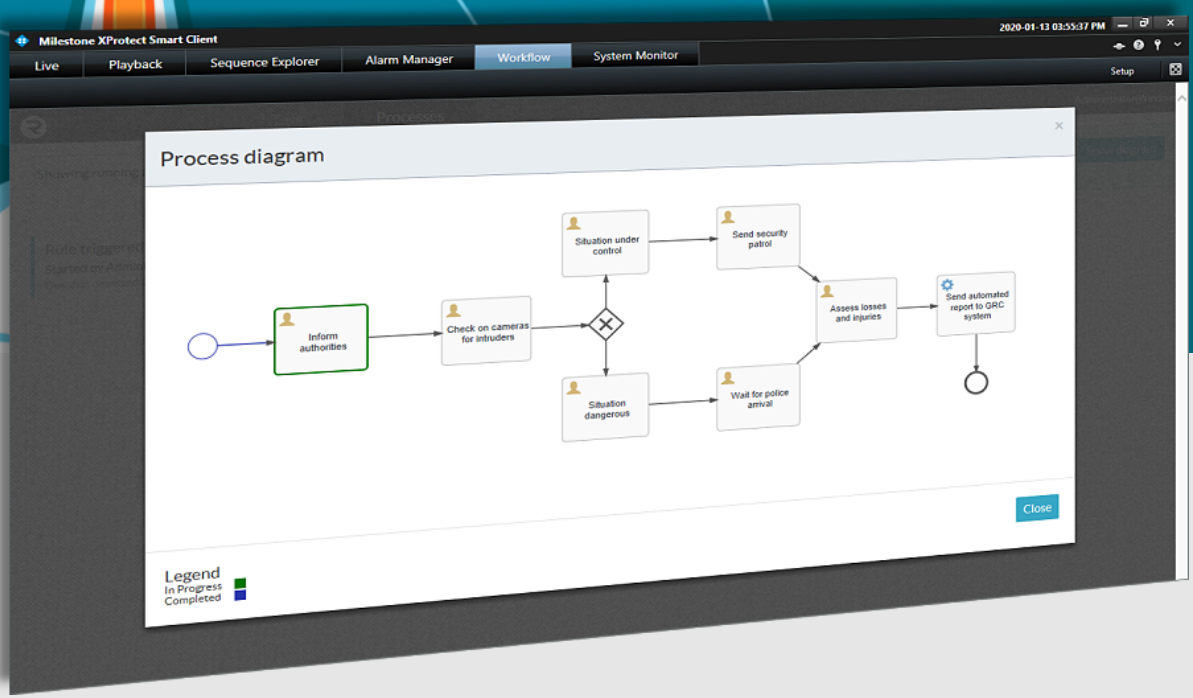




strategy
WORKFLOW

- security
- analysis
- risk
- process



1 Radium Workflow

Important events and alarms in Milestone XProtect® require a workflow.

Radium Workflow adds a workflow process to an event received from all our Milestone Plugin's, Milestone Community partner or generated by Milestone XProtect® itself that can be added to the Milestone rule system. The workflow is facilitated by a Process Editor within the Milestone Management Client and is available to view within the Milestone Smart Client during the execution process.

The workflow is integrated into the Milestone Rule Engine and multiple workflows can be created.

Trigger any call-back event in the Milestone Rule Engine through an Analytic Event anywhere within the Workflow.

- For example:
- Send an Email Notification
 - Send an Alarm to the Alarm Manager
 - Send an Event to the Smart Wall
 - Send and IO event

And many more...

2 Why do you need a workflow?

Alarms go off, get closed or silenced and the reason ignored, with no traceability or procedural accountability.

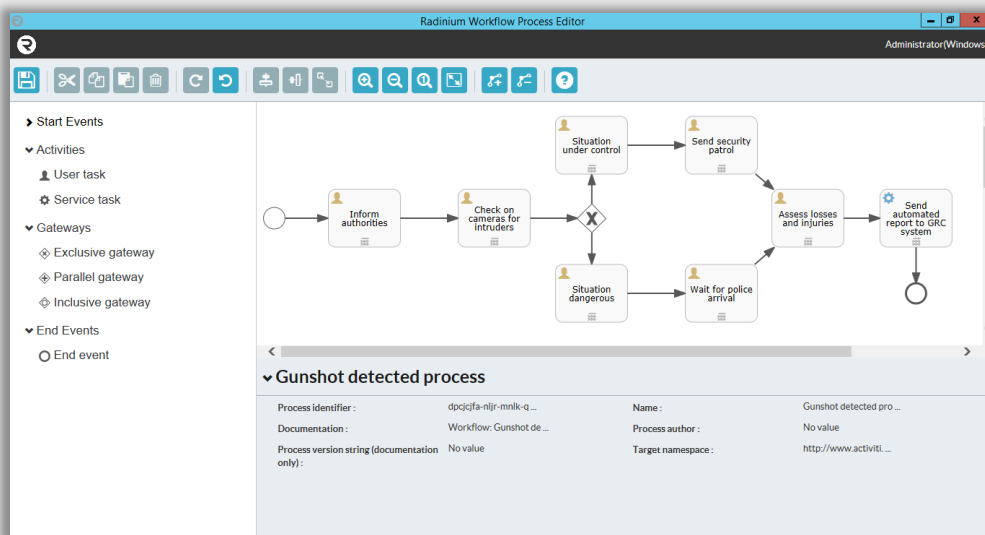
Your client can customize their own actionable procedures with a graphical notation or drag & drop flow diagram.

In the Milestone Management Client our Process Editor offers a simplified subset of the BPMN 2.0 Workflow standard for creating tasks and processes, and these are then actionable via the Smart Client.

3 Process Editor

Create and customize your workflow according to your policies by basing each workflow on a particular application.

For Example: You have a Milestone Community Partner that provides you with a Gunshot detection system. Create a workflow based on the necessary procedures to follow in the Control Room when the alarm is received.



Configure your workflow(s) by clicking and dragging any of the elements from the toolbox on the left onto the canvas.

You can create multiple outcomes using the Gateway Elements.

See the workflow documentation and tutorial videos for a more in-depth explanation and examples.

Link your workflow via the Milestone Rule Engine to start an Event.

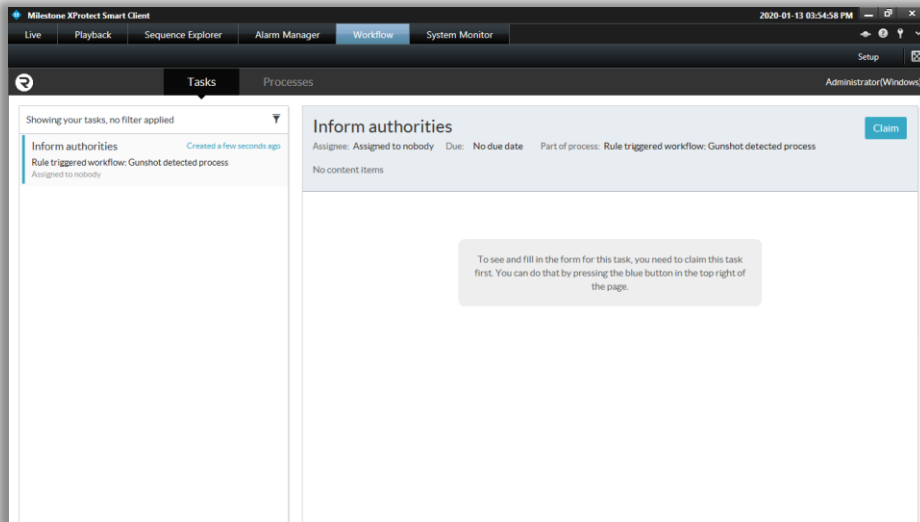
The 'Manage Rule' dialog box is shown. It has fields for Name, Description, and Active (checked). Below is a list of actions for 'Step 3: Actions':

- Stop plug-in on <devices>
- Apply new settings on <devices>
- Set Matrix to view <devices>
- Send SNMP trap
- Retrieve and store remote recordings from <devices>
- Retrieve and store remote recordings between <start and end time> from <devices>
- Save attached images
- Activate archiving on <archives>
- On <site> trigger <user-defined event>
- Trigger workflow process

The rule description is: 'Perform an action on Gun Shot Detected from All Microphones. Trigger workflow process Gunshot detected process'.

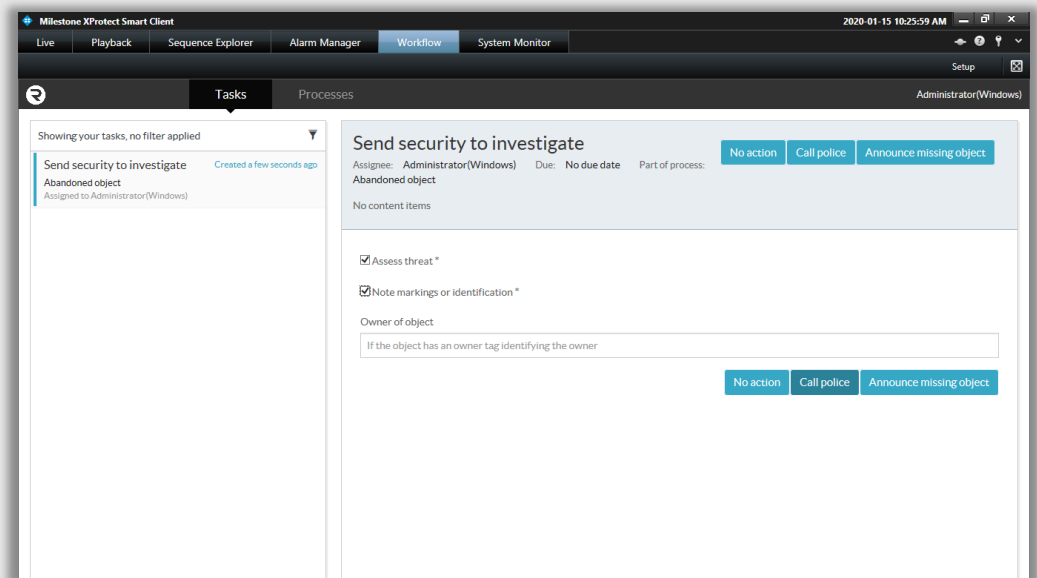


4 Smart Client



When an alarm is received, your workflow is automatically executed within the Milestone XProtect® Smart Client. Each assigned user can claim the task for each process that must be followed according to your design.

When the user claims the task, they will receive your instructions.



Now, you can apply all your procedure policies within Milestone XProtect®.

Visit our website to see more
radinium.com

RULES NEED NOT BE BROKEN