

RADINIUM CLICK

for Milestone XProtect®

QUICK INSTALLATION GUIDE

Product Version: 1.0.0.1



Legal Notice

The information in this publication is furnished for information use only and does not constitute a commitment from Radinium for any of the features or functions discussed. Radinium assumes no responsibility or liability for the accuracy of the information presented, which is subject to change without notice. The Workflow and all other Radinium software or service names and slogans are registered trademarks of Radinium and all other registered trademarks are property of their respective owners.

Disclaimer

Workflow is provided by Radinium "as is" and "with all faults." Radinium makes no representations or warranties of any kind concerning the safety, suitability, lack of viruses, inaccuracies, typographical errors, or other harmful components of Workflow. There are inherent dangers in the use of any software and you are solely responsible for determining whether Workflow is compatible with your equipment and other software you have installed. You are solely responsible for the protection of your equipment and backup of your data. Radinium will not be liable for any damages you may suffer in connection with using, modifying or distributing Workflow.

Overview

This guide provides quick installation instructions on how to install Radinium Click for Milestone XProtect®. It lists all product requirements and guides you through the installation process. It also explains how to obtain a 30-day 5 Smart Client Trial License. Up to five Smart Clients are allowed during the Trial per SLC and Site. It will not limit the general Smart Client use of the system, but will restrict the use of these enhanced operational features. This guide can be used by system integrators and administrators.

For detailed information on how to configure and use the product, please refer to our product tutorial videos.

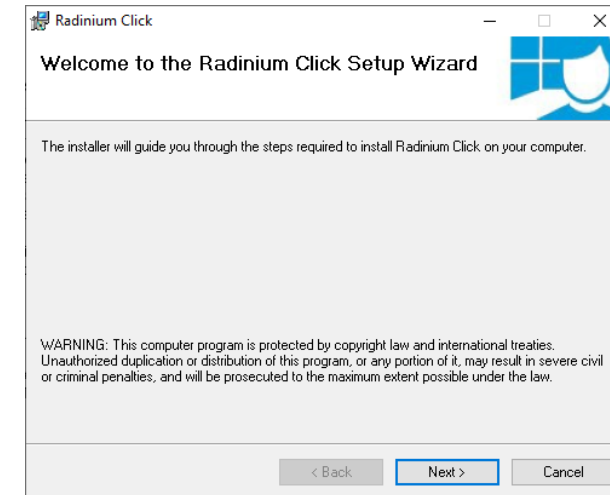
Installation Prerequisites

Milestone Express+, Professional+, Expert, Corporate 2019 R3 or higher must be installed and working. (Tested)

Windows LTSC
Windows 10 Pro
Server 2012 R2
Server 2016
Server 2019

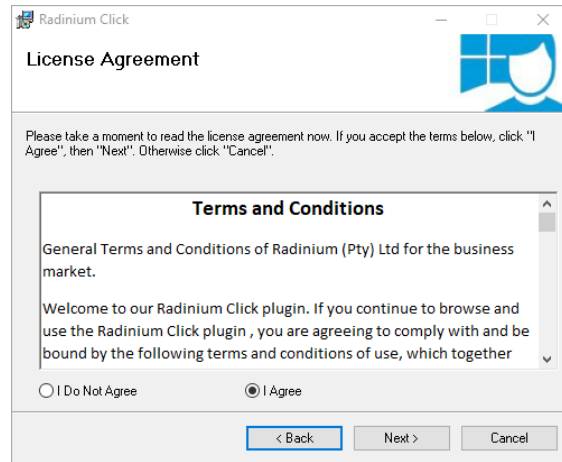
Installing Click

1. Download Click from www.radinium.com.
2. Run the setup package 'Radinium Click.msi'.
3. Do you want to install Radinium Workflow? Press Yes.
4. Installer will Extract.

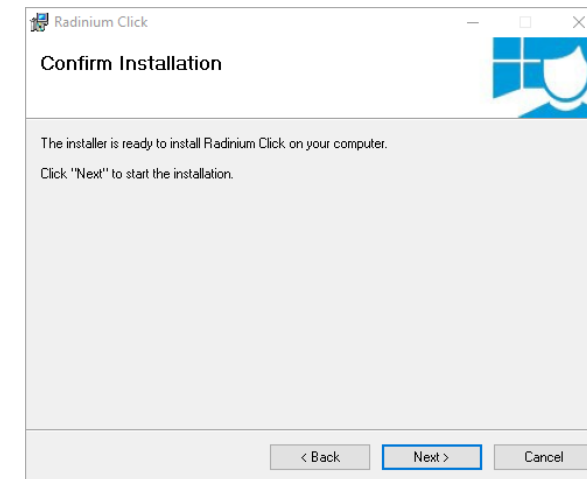


5. Press Next.

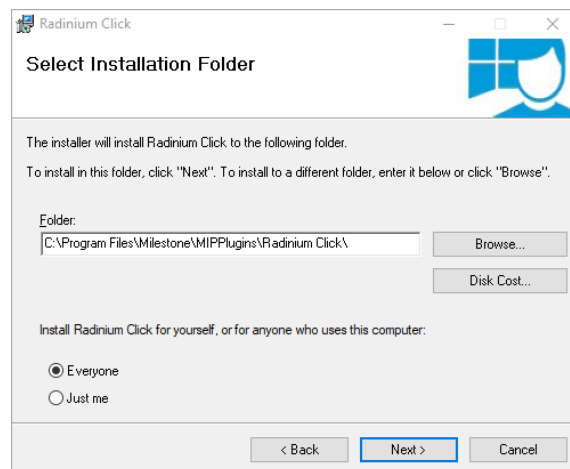
6. Accept the terms in the License Agreement and press Next.



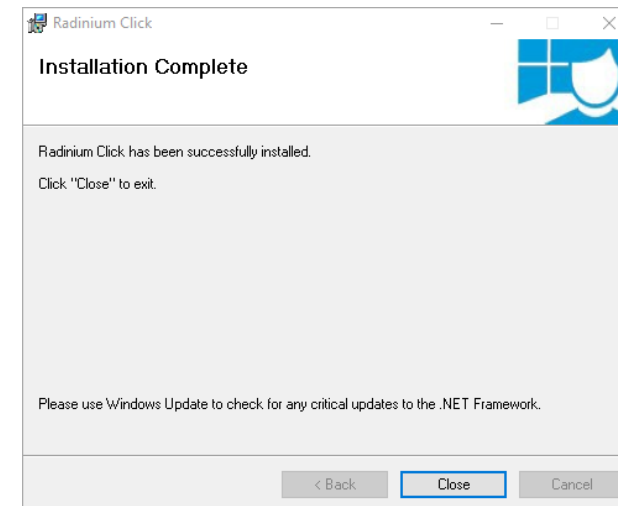
8. Press next to install.



7. Select the installation folder. We recommend using the one supplied. Press Next.



9. Press Close when done.



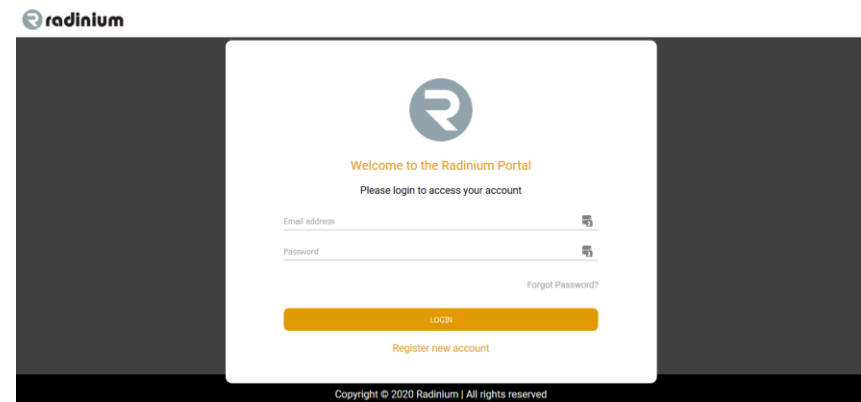
10. Install the same on each an every Smart Client Workstation you require.

Obtaining a 30 day Trial License

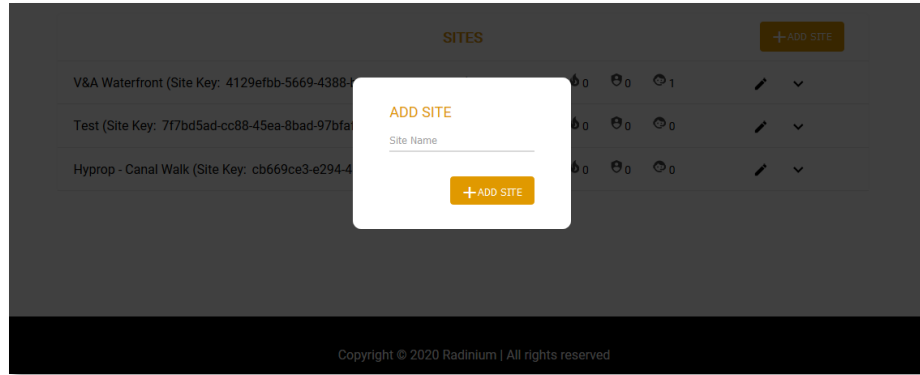
1. Go to www.radium.com.
2. Click on Portal on the top menu.



3. Register an account if you do not have your login credentials.



4. Once you are logged in, go to Add Site and enter your Site Name.

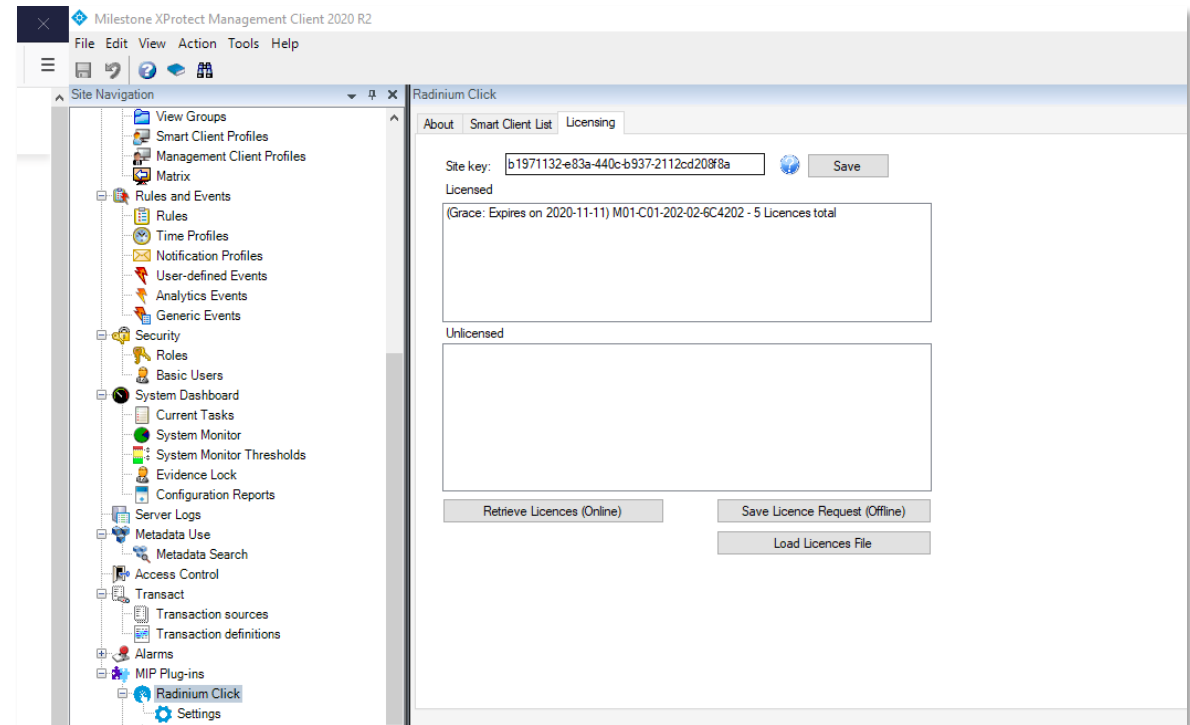


5. Copy your Site Key onto your clipboard by pressing the Copy icon or **ctrl/c** with your mouse.









SITES							+ADD SITE
V&A Waterfront (Site Key: 4129efbb-5669-4388-b31c-538df5db95fc)							
Test (Site Key: 7f7bd5ad-cc88-45ea-8bad-97bfafe45cb)							
Hyprop - Canal Walk (Site Key: cb669ce3-e294-41b4-aa17-abc82cde757)							
Office (Site Key: 5f9eae87-c172-491e-860d-449109a9439a)							
Shopping Centre (Site Key: 57132bc3-116e-481a-b94b-a206c7215d50)							
Test2 (Site Key: b1971132-e83a-440c-b937-2112cd208f8a)							


6. Open the Milestone Management Client and go to MIP Plug-ins, Radium Click -> Licensing. Copy the Site Key inside the Site Key box and Save. You will then see an unlicensed key. Click Retrieve License (Online) if you are connected to the Internet. It will retrieve a 5 Smart Client License with a 30-day grace period linked with your Milestone SLC.

If you do not have internet onsite, go to the Offline License Request section in this document



7. To check your Registered Trial License, go back to the Portal and click on the down arrow, which will show your Site License linked with your SLC.

Test2 (Site Key: b1971132-e83a-440c-b937-2112cd208f8a)   0  0  0  0  1  

 Upload offline license request [SUBMIT](#)

Product Type	Serial number / SLC	Panel Number
Click (TRIAL)	M01-C01-202-02-6C4202	N/A

Offline license request

Instead of retrieving your license online, you can Save License Request (Offline) in the Milestone Management Client in a .lrc file.

Take that file, go to your Portal and upload the Offline License Request. It will generate a .lic file, which you can then upload in the Management Client Radinium Click Licensing tab by clicking on Load License File.